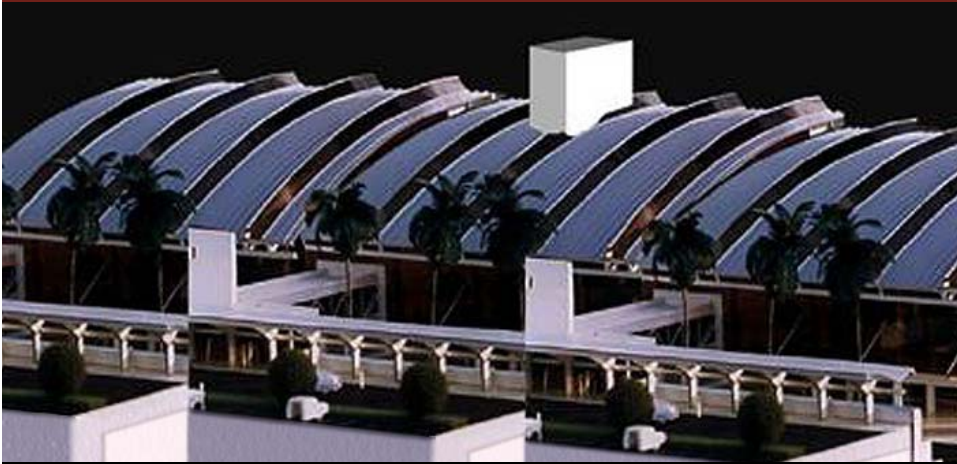


Juan Santamaria International Airport



Rendering of planned terminal expansion

The Juan Santamaria International Airport capital development program contemplates a range of technical and management services for a capital improvement program to expand and modernize the airport. The capital improvement program is divided into four elements: airfield, ancillary, and two stages of terminal projects.

Airfield projects include reconstruction of the existing taxiway and construction of new facilities including a runway holdpad and south parallel taxiway. In addition, a new and reconstructed apron will comprise nine contact gates and two remote parking stands west of the terminal. This phase of the program also involves the relocation of 1.25 miles (2.2 kilometers) of La Candela Road.

Ancillary projects include construction of a new 26,000-square foot (2,400-square-meter) pre-engineered hangar, and a 6,500-square-foot (600-square-meter) pre-engineered maintenance facility.

The terminal projects will consist of a new terminal and processor facility, reconstruction of the existing terminal and concourses, and remodeling of temporary arrival and departure areas, holdroom, and contact gate facilities.

BECHTEL'S ROLE

In a fully integrated joint venture with Edica (Costa Rica), Bechtel is responsible for the execution of all capital improvement projects at Juan Santamaria International Airport. The joint venture will self-perform all engineering and construction work, except specialty mechanical and electrical building work. Services include planning, preliminary and final design, direct hire construction, and construction management services to remodel and expand the terminal and concourses, build a taxiway, and resurface existing runway during full operating conditions. A technology transfer program covers airport engineering, procurement, controls, and

Location:

San Jose, Costa Rica

Client:

General Directorate of Civil Aviation –
Ministry of Public Works and Transport

Scope of Services:

Engineering, Procurement and
Construction

Project Duration:

2000–2013

Total Installed Cost (Est.):

\$107 million

Significant Features/ Accomplishments:

- Provided single point of contact for the execution of all capital improvement projects
- Performed construction planning and staging for off-revenue hours to avoid disruption of ongoing airport operations
- Developed a technology transfer program that covers airport engineering, procurement, controls, and safety

safety. Bechtel is also preparing a general development plan to update the master plan for an orderly, efficient expansion program to the year 2010.

Detailed construction phasing and scheduling plans have been developed to complete the work in an efficient and timely manner without interrupting ongoing airport operations. Night-time work is being completed on the single runway to accommodate ongoing flight operations. Temporary diversions are planned and implemented to maintain the flow of passenger and aircraft traffic.

A full life-safety analysis is being completed for the existing terminal to bring the infrastructure up to international airport codes. In the analysis, airfield safe fuel change and drainage concepts are evaluated and discussed.